

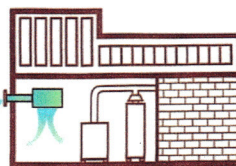
...your "go to" building supply since 1948

Garden City Park Port Jefferson Station

516-741-4466

631-473-3322

FOR ALL YOUR ROOFING NEEDS



The original and most practical alternative to metal louvers

Compared to standard louvers, wall openings can be reduced by up to 80%
PAI-2 uses indoor air to temper incoming outdoor air for increased comfort

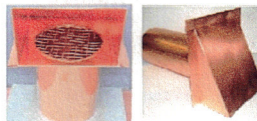


	Max. Btu/Hr. Gas Draft Hood	Max. Btu/Hr. Fan Assisted or Power Burner	Max. Btu/Hr. Oil Fired Flame Retention	Max. CFM
PAI-2G	150,000	280,000	N/A	80
PAI-20	N/A	N/A	260,000	80
PAI-4	450,000	850,000	775,000	250
PAI-6	1,300,000	2,500,000	2,300,000	680
PAI-7	2,100,000	3,700,000	3,700,000	1175

This table is for general reference only. Refer to complete selection table in In-Forcer literature or instructions for details.

PAI-2G & PAI-20
Includes PVC elbow

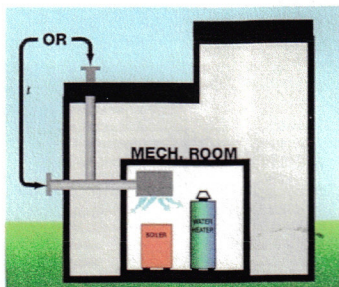
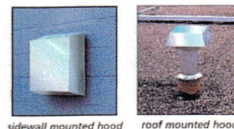
Add copper, aluminum or stainless steel low profile cap



PAI-4 PAI-6 PAI-7

For larger or multiple appliances with higher BTU's

Includes low profile aluminum hood



IN-FORCERS for residential and light commercial applications feature:

- ♦ Automatic regulated control of fresh combustion air
- ♦ Light indicating proper operation
- ♦ Interlock shuts down burner if intake elbow is blocked or performance is significantly reduced
- ♦ Split wheel blends outdoor/indoor air for comfort
- ♦ Includes off-cycle damper



Installation is Simple and Fast

1. Install standard 3" PVC pipe through wall at desired location. (Screened intake and PVC coupler supplied.)



2. Mount IN-FORCER almost anywhere, including between joists, using built-in hanging bracket.



- (OPTIONAL STEP)
Attach 6" flex or metal fresh air outlet duct and route to desired location.

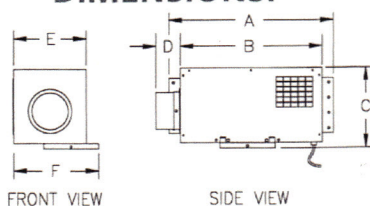


3. **24 VAC CONTROLLED MODEL PAI-2G**
Connect color-coded low voltage control cable to burner circuit. Plug cord into outlet.

- 115 VAC CONTROLLED MODEL PAI-20**
Wire in series with controls.



DIMENSIONS:



MOTOR SPECIFICATIONS:

115/1/60 1600 RPM
80 WATTS 1.0 FLA

A	B	C	D	E	F
17 3/4"	15 5/8"	8 7/8"	2 5/8"	8"	9 3/8"

PAI-2 Series Application Tables

• PAI-2G for 24 VAC Control Circuits

• PAI-2O for 115 VAC Control Circuits

Step 1: Determine the required CFM from **Table A** based on equipment type and BTU/hr input of the heater(s).

Step 2: Calculate the equivalent length of 3" PVC inlet pipe and 6" outlet duct (if used) from **Table B**.

Step 3: Referencing **Table C** and your calculated equivalent length, verify that CFM performance listed in **Table C** is equal to or greater than that determined in **Table A**. Select Model PAI-G or PAI-O Series based on control circuit voltage.

Table A Required CFM Based on Equipment Type and BTU/HR Input

BTU/HR INPUT	GAS		OIL FLAME RETENTION
	ATMOSPHERIC	INDUCED COMBUSTION	
40,000	21	11	12
50,000	26	14	15
60,000	32	17	18
70,000	37	19	21
80,000	42	22	24
90,000	47	25	27
100,000	53	28	30
110,000	58	30	33
120,000	63	33	37
130,000	68	36	40
140,000	74	39	43
150,000	79	41	46
160,000	—	44	49

BTU/HR INPUT	GAS		OIL FLAME RETENTION
	ATMOSPHERIC	INDUCED COMBUSTION	
170,000	—	47	52
180,000	—	50	55
190,000	—	52	58
200,000	—	55	61
210,000	—	58	64
220,000	—	61	67
230,000	—	63	70
240,000	—	66	73
250,000	—	69	76
260,000	—	72	79
270,000	—	74	—
280,000	—	77	—
290,000	—	80	—

Table B Calculate Equivalent Length

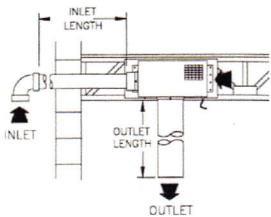
The performance shown is based on equivalent feet. To determine the equivalent feet, add the length of the 3" PVC inlet pipe plus the equivalent length of any elbows. Do not include intake elbow or gooseneck equivalent loss, they have already been factored into the performance data. Use the same method to determine the equivalent feet if a 6" outlet duct is installed.

EQUIVALENT LENGTH OF ELBOWS

ELBOW DIAMETER	90°	45°
3" PVC	5'	2.5'
6"	10'	5'

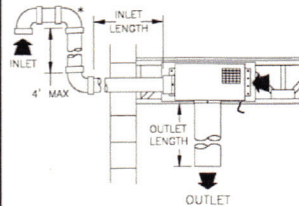
Table C In-Forcer CFM Performance Data

Conventional straight thru wall intake



		3" PVC INLET LENGTH			
		2 FEET	10 FEET	15 FEET	20 FEET
6" OUTLET LENGTH	0 FEET	80 CFM	68 CFM	65 CFM	60 CFM
	10 FEET	75 CFM	65 CFM	62 CFM	57 CFM
	20 FEET	70 CFM	60 CFM	57 CFM	52 CFM
	30 FEET	—	—	—	—

Optional gooseneck intake

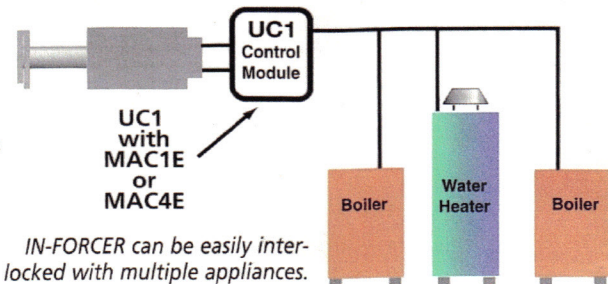


		3" PVC INLET LENGTH			
		2 FEET	10 FEET	15 FEET	20 FEET
6" OUTLET LENGTH	0 FEET	64 CFM	58 CFM	54 CFM	53 CFM
	10 FEET	62 CFM	54 CFM	52 CFM	49 CFM
	20 FEET	58 CFM	50 CFM	48 CFM	44 CFM
	30 FEET	—	—	—	—

*PVC EXTENDED FOR BELOW GRADE APPLICATIONS OR ANTICIPATED SNOW LINE

Easy interlock options

- ◆ Add MAC1E to interlock one additional 24/115 VAC burner
- ◆ Add MAC4E to interlock up to four additional 24/115 VAC burners
- ◆ Add WHKE in conjunction with UC1 or MAC-Series controls to interlock with self generated millivolt gas heaters



IN-FORCER can be easily interlocked with multiple appliances.

www.volko.com
Volko
Supply Co.

...your "go to" building supply since 1948
Garden City Park Port Jefferson Station
516-741-4466 631-473-3322
FOR ALL YOUR ROOFING NEEDS

